

Manta
By Klankennest company

This is a social story guide to attending sensory friendly performances during ŽiguŽajg.

The guide is intended to help prepare you for a new experience and help you to become familiar with the surroundings and the performance.

Welcome to Teatru Manoel



Entrance at Old Mint Street. This is what the building looks like from the outside.



The assistants will be wearing a t-shirt like in the picture above.
You can ask an assistant if you have any questions and they will do their best to help you. They will check your tickets and guide you to the lift you need to go to theatre.



When you enter through the front door, the festival assistant will approach you and guide you to the lift to go up to the theatre on the 2nd floor. You will not see the lift from the entrance but a desk.

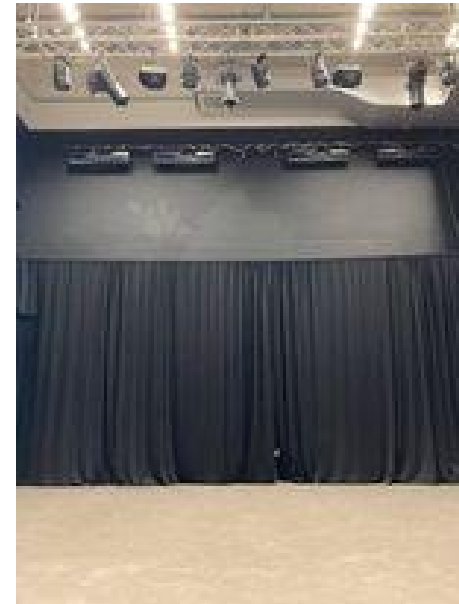
The lift is just on the right side of that desk



As soon as you go out from the lift, you see on your right the door which will lead you to the theatre. And you will walk through this door to get inside the theatre.



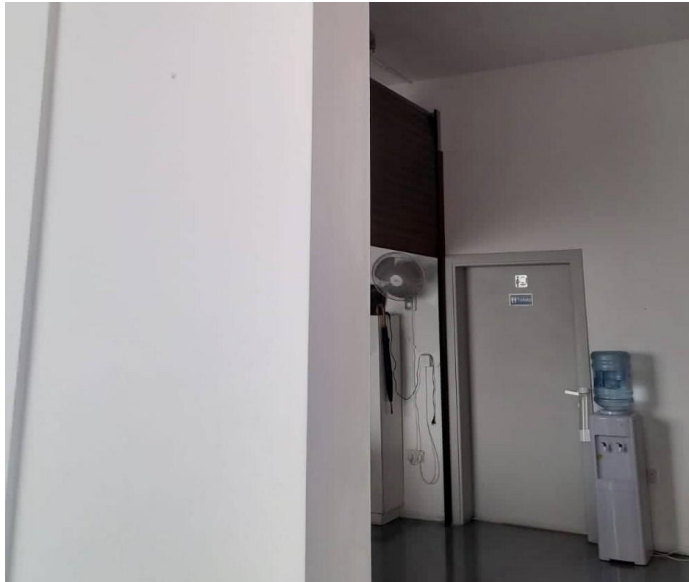
This is the theatre from inside. It may be a little bit dark inside but not too dark



There will be an area for you if you need a break during the performances. It will have sofas that You can use the area during the performance. You can come back to the show whenever you are ready.



If you need to use the restrooms, you need to go out of the Theatre and on your left you will find a small room, you enter that room and you will find a door marked with the restrooms sign.



Here is a guide on the performance you will see. The performance is called

Manta
By Klankennest company

What is Manta?

- Manta is a dialogue between music, image, light and movement thought for children;
- 3 musicians will be performing
- The audience (adults and children) have to take off their shoes to sit on cushions on the stage;
- All music and sound is live and acoustic (only some water sound is amplified)
- Lights are adapted for the eyes of a very young audience. It will be soft, filtered, colourful and sensory-friendly.

- A glass mobile will be hanging in the performance space.
- The performance is interactive. Audiences aged between 4 months and 2 years are free to move during the performance, they can touch, crawl, respond,... during the show. All other audiences stay on their cushions.
- The performance is approximately 25 minutes plus 15 minutes of free play and it has no interval.
- The singer (Liesbeth) will talk to the audience before the performance starts in the welcome room (where the audience also takes off their shoes) before the stage. She will invite everyone to enter.
- The start of the show is when everyone is seated on the cushions
- DuriAll children are free to express themselves in their very individual way.
- You might hear other people in the audience cheer, clap, shout out or scream. You can join in if you like.
- During the show you might feel that you need to take some time out. You can leave the performing space and go to the space for breaks. This is advised even for babies who feel uncomfortable or cry, everyone is welcome in the chill out area who needs it.
- You can return to the show when you feel ready.
- You can clap if you want to.
- All musicians will not leave the stage, they stay during the free play.
- The end of the performance will be clear. There is also a 10 to 15 minutes free moment to play and explore
- You can now leave the premises. You can take the same route you took when coming in.

What happens in the story?

- 3 musicians will take you on an immersive, multi-sensory journey with sound, music, movement and visual arts.

We hope you have a great time.